

# • Special SG Election Issue •

Voice of the Student Body

# OBSERVATION POST

Vol. XXXI, No. 13

UNDERGRADUATE NEWSPAPER OF CITY COLLEGE 401

MONDAY, MAY 7, 1962

## Juniors . . .

The College's second annual Junior Day will be held on May 17. Activities will include a Miss Junior Day Contest, open to all co-eds, and entertainment by the Musical Comedy Society. President Gallagher will pick the winning raffle tickets, which are now being sold at fifteen cents apiece.

## OP

### Endorsements At A Glance

SG President: **TED BROWN**

SG, Vice-President: **No Endorsement**

SG Treasurer: **MEL PELL**

SG Secretary: **MARJY FIELDS**

NSA Delegates: **MARJY FIELDS**

Student Council: **HOWARD SIMON**

**BOB ATKINS**  
Class of '64

Senior Class President: **KEN SCHLESINGER**

# Three Vie for Presidency As Elections Begin Today

## Candidates In Novel Race

By Tim Brown

Fortune Cookies used as election propaganda and a new Student Government Constitution highlight a campaign marked by innovations.

Also novel in this campaign will be the extension of elections over four days, previously held in three, and the elimination of in-class voting.

The latter was accomplished, according to Student Government sources, for the purpose of avoiding such irregularities as campaigning in class, out-of-class voting, and multiple voting. It was said that the extension of the voting period would compensate for votes lost through this procedure.

Also for the first time delegates to the National Student Association Congress will be selected by a school-wide election. The number of delegates has been reduced to



SG President Fred Bren  
Incumbency Ends

five for the College, as a result of a drop in registration here.

Previously six delegates represented the College, one of whom was the SG President-elect. The latter procedure will remain in effect with only four delegates to be elected school-wide.

Next term's officers will be the first selected under the newly approved SG constitution.



Richard Shepard  
Retiring Vice-Pres.

The vice-president, who under the old system would have had the duty of coordinating some six agencies and several bureaus, will now have only two agencies and one bureau to work with.

In addition, however, he will probably bear the responsibility for aiding in the establishment of the newly-formed Student Activities Board.

The board, to be composed of representatives of federations of organizations on campus, will coordinate and regulate extracurricular activities among all clubs and organizations.

Its actions, subject to the approval of Student Council, would free that body from many of its present functions.

## Three Slates In Contest

Two upper juniors and one sophomore will vie for the Student Government presidency in school-wide elections beginning today.

Juniors Ted Brown and Herb Berkowitz will contest the presidency heading the Responsible Student Government Party (RSGP) and the This Campus First (TCF) party respectively. Alan Blume, an upper sophomore also seeking the post heads the Independent Reform Ticket (IRT).

Running with Blume for the vice-presidency will be Bob Levine, also a sophomore. Opposing him for the post are Ira Bloom (TCF) and Mark Kessel (RSGP), both upper juniors.

The treasurer's post, uncontested as usual, will be sought by Mel Pell (TCF); Marjy Fields (RSGP) and Samuel Eiferman (IRT) will battle for the position of secretary.

Presidential candidates Blume and Berkowitz are campaigning on a program of greater emphasis on school-wide politics and campus affairs, while Brown favors a broad scope of activity for Student Council.

With four places open on the delegation to this summer's National Student Association Congress, only four students are seeking the post. Three are running on the RSGP line, and one on the IRT.

The four are Bob Levine (IRT), and RSGP nominees Marjy Fields, Howard Simon, and Judy Kaufman.

Also uncontested is the race for Senior Class President, sought only by Kenneth Schlesinger. He is endorsed by all three tickets.

Voters will have the option of casting a "Yes" or "No" vote on unopposed candidates.

Three candidates are running for one vacancy on the Student Council from the class of 1963 Martin Fogelson (TCF), Lawrence Weiss (IRT), and Mitchell Zimmerman (RSGP)

In the class of 1964, Robert Atkins (RSGP), Robert Dimino, Richard Kane (IRT), Barry Smith (TCF), and Stephen Stark are competing for one available seat.

Eight students are seeking the council post in the class of '66, with six positions open. They are Michael Birnbaum (IRT), Susan Fischer (TFC), Joel Goldberg, Robert F. Held (IRT), Dennis Neier (IRT), Beverly Roth (IRT), Stanley Shapiro (IRT), and Schneor Sherman (TCF).

# College Seismologist Says, Bomb Tests Are Detectable

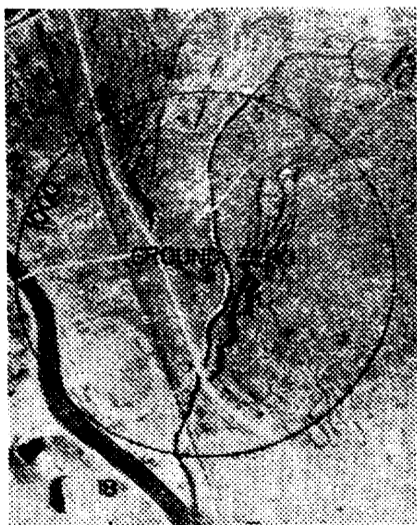
The director of the College's Seismograph Station said Wednesday that he was "surprised" at the United States' position regarding the detection of underground tests.

Professor Daniel T. O'Connell (Geology) was asked to comment on the position of Dr. Lewis Don Leet of Harvard University, who recently declared that the United States data on the detection of underground tests in Project Vela was "as full of holes as Swiss cheese." Dr. Leet, one of the leading seismologists in the country, referred to the evidence of Project Vela that was presented at the recent Geneva negotiations on the nuclear test ban.

In his response to Dr. Leet's statements printed in (March 16 and 24), *Harvard Crimson*, Professor O'Connell said that although it "was possible that minor underground tests might get by," major underground tests could be detected and be easily distinguished from earthquakes by proper means.

Professor O'Connell questioned the requirement of international control posts to be set up under the United States proposal on banning testing. "At present there is such a network." According to Professor O'Connell, this network consists of seismograph stations and other scientific centers all over the world.

In a telephone interview Thursday, Dr. Leet said that any underground nuclear test of any military value (known to three kilotons) could be detected by present means



Aerial View  
Hiroshima After Bombing

and be distinguished from earthquakes. The bomb dropped on Hiroshima was 20 kilotons. He also said that the Russian proposal at Geneva calling for reliance on national inspection was "reasonable."

Professor O'Connell said that earthquakes have a signal of longer duration than explosions such as nuclear blasts. Dr. Leet revealed that he would document his statement in an article in *Scientific American* appearing in two and one-half weeks.

## AN OP ANALYSIS

# Fred Bren Examines SG Accomplishments

BY BRUCE SOLOMON

To Student Government President Fred Bren, this has been a term of rare accomplishment for SG—most of it by Bren himself.

With this week's school-wide elections to serve as a reminder that the term is nearing an end, Bren can point justifiably to:

- passage by the General Faculty Committee on Student Activities of the constitution which grants SG its first specific powers, including allocation of fees to student organizations and approval of club constitutions.

- the institution of a federated club set-up which allows the nine federations to handle club publicity, instead of the Department of Student Life, and to coordinate club activities.

- the raising of the Student Activities Fee from \$2 to \$3 in a special referendum, after similar attempts during regular elections had failed.

- the leading of an anti-tuition fee lobbying trip by student leaders to the state capital in Albany. Bren

was praised, even by his severest critics, for his skillful organization of the students who, for the most part, were unacquainted with "the ends" of politics or the nuances of the tuition question.

Actually, Bren finds little difficulty handing out credit for these achievements. He takes most of it himself.

He gives blame for SG inaction at least as freely. Most of it falls on "various liberals," who, he claims, were "interested only in passing resolutions on Freedom Rides and peace marches."

Bren admits that early in the term he "had to force" Student Council members to work on the anti-tuition fee drive by distributing leaflets calling for a rally, buttons and postcards. During one Council meeting, he refused to move on to the next point on the

(Continued on Page 2)

# PLATFORMS

## This Campus First

The primary role of the Student Government should be its role on the campus of the College. One of the main problems of next term's Student Government will be the establishment of a functioning Student Activities Board to coordinate extra-curricular activities at the College. An expanded program of school wide activities, such as concerts, Saturday night dances, boatrides, etc., should be initiated by the Student Government through the Student Activities Board.

In order to foster and aid student activities at the College, he would like to see a student press which is responsive to the needs of the student community. Although I agree with the spirit of the proposed newspaper referendum, (i.e. that the student press should be more responsive to the needs of the student body), we feel that this referendum was hastily put together and therefore we can not support it.

## Responsible Student Govt. Party

The Responsible Student Government Party will provide students with exactly that, responsible student government. We make no promises to specific groups or organizations that are designed to win votes at election time. Rather, we will give every student and every student organization the fairest treatment and the most intelligent concern that is possible.

Specifically, we feel that the student newspapers, *Campus Observation Post*, and *Tech News*, should receive a fixed percentage of the

student fees so as to allow them to continue to publish and, at the same time, to keep them free from editorial control. If the newspapers are not doing an adequate job of covering student activities, then their discontinuation will only aggravate, not improve, the situation.

We also feel that all questions before Student Council should be approached on their own merits, and not on the basis of pre-conceived ideas or unjustified limitations. Only an intelligent evaluation of each issue by the elected representatives of the student body can provide a truly representative student government, and one whose statements are meaningful.

Most importantly, we believe that the purpose of Student Government on campus is twofold: to help promote student activities; and, to effectively present the complaints and grievances of the student body to the faculty and administration. Only a student government which is mature, responsible, and respected can improve the extracurricular program and can get specific grievances redressed. The Responsible Student Government Party, if successful in this election, will provide the student body with this kind of student government.

## Independent Reform Ticket

The members of the INDEPENDENT REFORM TICKET endorse and subscribe to the following principles: 1. The realization of true student self-government at the College; 2. The maintenance of a democratic and representative student; 3. A student government primarily concerned with matter af-

fecting the City College student — his needs, desires and general welfare.

The members of the IRT advocate action in the following areas of concern.

1. Year-round anti-tuition action;
2. Expanded Student Government services and programs;
3. North Campus and South Campus improvements
4. Re-emphasis of varsity athletics
5. Establishment of an S.A.B. Newspapers
6. The creation of a DISCOUNT AGENCY to save students money at stores throughout the city.
7. Continued extension of Library hours
8. Coordinated graduate program expansion campaigns
9. Bookstore co-op; discounts
10. Cafeteria and Snack bar improvements in prices and atmosphere;
11. Speaker Ban; No limitations should be set with regard to who may speak at the College.
12. Publication of a **Beaver Handbook** WOULD encourage the maintenance of CCNY's traditions and heritage.
13. All College Conference
14. The IRT is in favor of giving both GREEK LETTER AND HOUSE PLAN CONTACT more money than the fifty dollars they are now receiving.

## Drama . . .

The Speech Department is presenting "Impromptu '62", scenes from classic and modern drama, on Thursday at 12 Noon and 7 PM in the Townsend Harris Hall. Admission is free.

whatever action I felt was necessary."

The diminutive President ties his beliefs that Student Council is becoming too preoccupied with outside political issues and the failure of too many members to make "a real contribution" to what he calls "the in-group" on SG.

"I've come to believe, as Professor Lawrence Podell (Sociology), that for these people, most of whom were friends before joining SG, that SG is nothing more than personality fulfillment," said Bren. He defines such a person as "someone who feels he has to round out his personal life by spending all his time on SG, since he wouldn't be accepted elsewhere, perhaps because of personal shortcomings."

It is people who belong to other organizations and who have a well-rounded social life who make the "real contribution" to SG, says Bren.

"Most of my own personal friendships are outside SG," he says.

## Bloom . . .

(Continued from Page 3)

with Council this term when it took action in the areas of tuition, cafeteria, and extending library hours. "SC really asserted itself on campus," Bloom declared.

He interprets the controversial "students-as-students" clause in the SG Constitution as "the interest of students at the City University rather than interests elsewhere."

"Social action organizations should handle external projects. There is nothing stopping SG individuals from participating as individuals, not as members of SG."

## Levine . . .

(Continued from Page 3)

gulls pass his apartment near Central Park, how he considers himself a geography major in spite of the fact that you can't be at the College, and how he got interested in Student Government.

"A friend handed me a nominating petition for Student Council when I was a freshman" he reminisced, "and it was then I first heard of SG." By now, the tallish Levine, who is an upper sophomore, has heard quite a bit more, having spent four terms at the College on, in, or around the SG office.

"Maybe it's masochism, sitting on council til 11:30" he commented, "but I like working with people and enjoy the public life, even if I'm only doing little things, like making posters."

Looking ahead to some of the big things he may be doing if he's elected, he sees the vice-presidency as a job in coordination; nevertheless, he has some ideas of his own. In addition to pushing for a sustained anti-tuition drive and an Academic Freedom week at the College, he'd like some "down-to-earth" improvement in the Snack Bar's flooring. "That composition flooring just kills the workers' feet!" he complained.

Last term, Levine had the unusual distinction of winning the SG Secretaryship on the first count, and then losing on the second count, to his opponent Richard Weisberg by 229 votes. This term he hopes to appeal to the students at large by what he terms his "most realistic" interpretation of Student Government. "At any rate," the IRT candidate added "I don't think I'll be railroaded."

## Kessel . . .

(Continued from Page 3)

Kessel is always courteous and gentlemanly.

"He's one hell of a nice guy," the head of an opposing ticket said.

A newcomer to Student Government, Kessel quickly won the respect of older SG hands. "He's the only person on Council who really listens to debate," his running mate says! Appointed to the Committee to Close Convent Avenue, Kessel went so far as to reroute the bus lines.

Kessel describes himself politically as a "little right of center" despite the fact that he is considered a "liberal" council member. Part of Fred Bren's Reform slate last term, Kessel now says: "I ran on reform and then I reformed."

## Analysis . . .

(Continued from Page 1)

agenda work; members had agreed to work on the drive during free hours.

After that, Bren claims, and his critics agree, "things deteriorated." Bren feels it was due to "heavy politics and personal antagonisms," most of which resulted from a particularly heated election campaign last December.

He cites, for example, a letter written by Bren to club and organization presidents asking them to support the referendum calling for the fee raise, even before SC had itself voted to support it.

Bren, nevertheless, calls this approach "one of caution," considering the antagonism felt toward him by many Council members. Referring to the letter, he says, "I took

We endorse

**TED BROWN** for President,  
**MARK KESSEL** for Vice-president and  
**MARY FIELDS** for Secretary.

KENNETH KLAZKO '65  
SEMA FICHTENMAUM '63  
JOEL BRENNER '63  
SURREL WEINTRAUB '63  
MICHAEL MEZEY '63  
TERRY PERLMAN '64

MARTIN ELSBACH '64  
DANIELLE FRAENKEL '64  
PETER BEAL '62  
BURT LAZARIN '65  
MEL LITOFF '63  
STEVE REBACH '63

YVONNE NEIDOFF '63

## Vote THIS CAMPUS FIRST

Look for the X next to the names on the ballot

**BERKOWITZ** for President

**BLOOM** for Veep

**PELL** for Treasurer

## LAST CALL

**FREE Cigarettes**

**KENT**

**NEWPORT**

**YORK**

Buy 2 Packs at Our  
Regular Low Price of 29c

and we give you

**1 PACK FREE**

**TODAY ONLY**

10 A.M. — 8 P.M.

**CITY COLLEGE STORE**

## NOTICE TO CCNY

I hereby accept the  
Position of Successor to  
the Most Honorable Gary Horowitz

Mel Litoff

# TAU EPSILON PI

—wishes to express its appreciation to the student body for its overwhelming support in making our Weavers Concert a sell-out.

—Extends particular gratitude to Harvey Malleman, Richard Schweidel, Jerry Bauman, Mike Schweitzer, Al Weinstein.

# Berkowitz Dresses Up For Presidential Race

By BARBARA BROWN  
S is for the S in Slob  
L is for the L in Slob  
O is for the O in Slob  
B is for the B in Berkowitz

Or at least that's how "the gang" describes him. SG Presidential candidate Herb Berkowitz however asserts that he is merely a "very, very casual" dresser.

As a responsible leader of the students, the fortune cookie king seems to have organized his This Campus First slate on the basis of one man, one eyebrow. Both he and his running mate Ira Bloom sport such an appendage.

Last term the dark-haired Upper Junior ran independently for the position of SG Vice-President and lost. Out of a total of 1050 votes cast, he was defeated by a margin of 150 ballots. Berkowitz attributes his near-miss to the "key endorsements" of *Observation Post* and House Plan, "a healthy list of qualifications" and one poster which offered the following ditty:

*Herb Berkowitz for Vice President,  
He smokes, he drinks, he sleeps  
with easy women,  
He's your kind of candidate.*

Poetry however doesn't occupy all of the philosophy major's time. Among savants Berkowitz is recognized to have been instrumental in transferring the control of publicity



Herb Berkowitz  
Casual Candidate

regulations from the hands of Student Life into the hands of SG.

Entering student politics because it "brings out a combination of the rat and orator in you," he assumes the same outlook about his future. Berkowitz the philosopher feels that he will end up possibly being a lawyer... maybe a bum. "I can always go on relief" he said.

Berkowitz the candidate feels that Student Council meetings are a "pitiful, pathetic, exercise in childishness." SC has been a little playpen. "The mature people go to organizations," he said. Berkowitz predicts that the SAB (Student Activities Board) will bring in bright people with a sense of responsibility, "who know where they come from, and who sent them."

The chubby candidate feels that the SAB is going to be important, and "will grow in power until SC disappears and dies of its own immaturity."

Classifying himself as a "conservative" off-campus and a "moderate" on-campus, he asserts that it is "about time SG got around to governing, rather than being a sounding board for every young left-winger in the school." SG shouldn't mix with outside politics, he declares; matters outside the campus tend to attract people who have an axe to grind. "The aim of most of the students is not to conquer the world."

## Seniors...

The Senior Class will be given graduation information on Tuesday May 8, at 4 PM in the Grand Ballroom.

POGO SAYS!  
IF YOU CAN'T VOTE  
MY WAY



VOTE  
ANYWAY!  
BUT VOTE!

# Brown Is Introspective Active, and Scholarly

The tall, dark-haired SG Presidential aspirant likes to stand aloof from the crowd, to philosophize, and to "people-watch" — but he also likes to act.

Although Ted Brown's 1.95 index and thoughtful manner may bring to mind the cliché of the bookish, introverted scholar, this is exactly the type of student he does not intend to be.

In fact, one of his pet peeves is the college student who "keeps his nose buried in a book, oblivious to important things going on on campus. We're attending an academic institution, not just getting a degree," the bespectacled Brown emphasized last week. We should take every advantage of it.

Like most politicians, he despises the term and feels that SG has created a bad image in the minds



Ted Brown  
Extroverted Scholar

of many students because there are "too many student politicians and too few student leaders." He considers himself among the latter group.

A Chemistry major for two and a half years, Brown switched to a unique BS in history because he found himself more interested in broader concepts than in working out specific experiments. He hopes to teach the history and philosophy of science on the college level — "not that there's a great demand for it, but that's what I'm interested in."

Comparing students on South and North Campuses, Brown observed that those on North Campus seem to have a better sense of humor. "Maybe they have to," he added, "if they didn't, they would crack under the relentless pressure of work."

Students on South Campus, on the other hand, tend to be more "socially aware."

The pipe-smoking upper junior "likes to laugh" and thinks a "sense of the absurd" is important. His favorite form of relaxation is to sink into a comfortable chair, beer can in hand, and watch a ballgame. He also has been seen to dance a mean twist.

Asked to describe himself in a few words, he chose instead to quote a former teacher. "Sometimes he looks very serious," the professor said of Brown, "and sometimes he has this lopsided smile on his face."

# Levine Seeks Veep Position

By LENA HAHN

Even if you are a confirmed bus rider, Bob Levine will let you vote for him. Seemingly a silly point, even for the treasurer of the Railroad Club, it points up the realistic side of what would otherwise tend to be a romantic nature.

A feeling for both living and inanimate things, for the solitary and the political life, is combined under the same dark topping of hair on Levine's head. So it is not strange that his eyes are liable to light up in a slow grin when he talks about such widely varied interests as the Railroad Club, the public park systems, or his work in New York City politics.

Talking carefully, in what can be described as a nasal drawl, he will tell you—and at some length—how he likes to watch the sea-

(Continued on Page 2)

# Blume On SG First Day; Hopes to Be US Senator

By MIKE GERSHOWITZ

"Politicians are illegal, immoral and underhanded, and I'm not." So says Alan S. Blume, Independent Reform Ticket candidate for Student Government President. Nevertheless, he has hopes of some day being United States Senator from New York.

The bushy-haired sophomore is often criticized for being immature and for lacking tact and courtesy. But he has served on Council longer than either of his opponents. In fact, he started working for SG his first day at the College.

As a senior at DeWitt Clinton High School, he had taken a tour of the campus, and picked up a copy of the old SG Constitution and by-laws. Over the summer he familiarized himself with them, and when he came here for good that fall, he joined the staff of *Spotlight*, the SG newsletter. The next term, he was elected to SG, and has been there ever since.

His pet idea, which he refrains from talking about because he fears people might make fun of him, is to make school election day a school holiday. He feels that if there were no classes on that day, five six, or even seven thousand students might pour out to cast their ballots.

He should know about school elections — this is the seventh time he is running in one. His batting average so far, .500, (3-for-6) is .500 better than his batting average in baseball. As a freshman, he was used as a fifth-string infielder and went 0-for-3.

Although he describes his philosophy as fatalist, he believes everybody should have a goal and strive toward that goal, even though he is not likely to achieve it.

After he graduates from the College, Blume expects to put in three years at Brooklyn Law School,



Alan Blume  
A Moral Politician

two years in the army, a year or two in a law firm, and then—on to the Senatorship.

# Kessel's Manner Betrays History

By BARBARA SCHWARTZBAU

Blond hair, blue eyes, Ivy League, Polite. That's Mark Kessel, the Responsible Student Government Party candidate for Vice President. A nice boy, nothing special. Until he talks to you.

Mark Kessel was born in Poland twenty years ago. He spent the first years of his life hidden in the home of a Christian spinster. He was kept in the cellar. He was very little when it happened and doesn't think about it much now. His parents lived in a large Polish city with false papers. They were not so young as Mark and they remember it very well.

Mark's mother remembers the day she almost got a one way train ride to Auschwitz. Mark's father, remembers standing in the cold with the other men, their pants in piles on the ground.

The Kessel family left Poland for the US in 1947. Mark has led a fairly normal life since then. In fact, for a boy who spent his youth in Eastern Europe Kessel has a deceptively All American appearance, but he has maintained his continental manners.

A door opener and check taker,  
(Continued on Page 2)

# Bloom Tries For Third Exec. Post

By DAVE ROTHCHILD

Ira Bloom, candidate for the SG Vice-Presidency, presents an appearance that can best be summarized as neat, cordial, and unassuming.

The current SG Treasurer is currently majoring in both Political Science and Economics. After graduation in 1964 he plans to enter either law school or do graduate work.

He has enjoyed his work as treasurer because he "got to know the programs, what was going on around campus."

Bloom's work on SG has had its trying moments, however. He was very unhappy over the charges levelled at Mr. Edmond Sarfaty during this time. It was in that amount of student funds was misplaced.

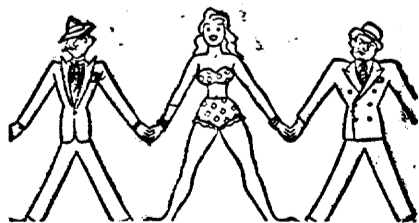
"I worked very closely with Mr. Sarfaty during this time. It was in no way his fault," Bloom asserted. The miscalculation has been ascribed to an error in bookkeeping.

If he is eloquent at Council meetings, this will come as no surprise to his fellow debaters. Bloom is on the Junior Varsity Debating Team, and enjoys a good debate in Council.

He was particularly pleased  
(Continued on Page 2)

# GUYS & DOLLS

A MUSICAL FABLE OF BROADWAY



Thursday, May 10, 7:30 P.M., \$1.50\*, \$1.00  
Friday, May 11, 8:30 P.M., \$1.90\*, \$1.35  
Saturday, May 12, 7:30 P.M., \$1.90\*, \$1.35  
Sunday, May 13, 7:30 P.M., \$1.50\*, \$1.00

\*Reserved Seats

WOLLMAN AUDITORIUM  
COLUMBIA UNIVERSITY

115 STREET and BROADWAY

Mail to:  
Columbia-Barnard Music Theatre  
206 Ferris Booth Hall  
Columbia University, New York 27, N. Y.

I would like \_\_\_\_\_ tickets at \$\_\_\_\_\_ per ticket for the \_\_\_\_\_ night performance of

GUYS AND DOLLS. A check for \$\_\_\_\_\_ is enclosed.

NAME \_\_\_\_\_

Enclosed is a stamped, self-addressed envelope.

Please hold tickets for me at box office.

**CAMP COUNSELOR OPENINGS**  
**UNDERGRADUATE STUDENTS**  
 (Min. age 19 & completion of at least 1 year of college)  
**GRADUATE STUDENTS and FACULTY MEMBERS**  
**THE ASSOCIATION OF PRIVATE CAMPS**  
 ... comprising 350 outstanding Boys, Girls, Brother-Sister and Co-Ed Camps, located throughout the New England, Middle Atlantic States and Canada.  
 ... INVITES YOUR INQUIRIES concerning summer employment as Head Counselors, Group Leaders, Specialties, General Counselors.  
 Write, Phone, or Call in Person  
**Association of Private Camps - Dept. C**  
 Maxwell M. Alexander, Executive Director  
 55 West 42nd Street, OX 5-2656, New York 36, N. Y.

**On Campus** with **Max Shulman**  
 (Author of "I Was a Teen-age Dwarf", "The Many Loves of Dobie Gillis", etc.)

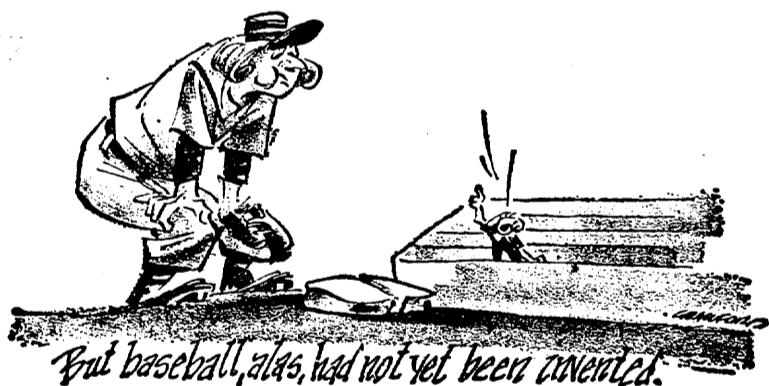
**CRAM COURSE NO. 5: SHAKESPEARE**

Continuing our series of pre-final exam cram courses, today we take up the works of William Shakespeare (or "The Bard of Avon" as he is jocularly called).

First let us examine the persistent theory that Shakespeare (or "The Pearl of the Antilles" as he is affectionately referred to) is not the real author of his plays. Advocates of this theory insist that the plays are so full of classical allusions and learned references that they couldn't possibly have been written by the son of an illiterate country butcher.

To which I reply, "Faugh!" Was not the great Spinoza's father a humble woodcutter? Was not the immortal Isaac Newton's father a simple second baseman? (The elder Newton, incidentally, is one of history's truly pathetic figures. He was, by all accounts, the greatest second baseman of his time, but baseball, alas, had not yet been invented.) It used to break young Isaac's heart to see his father get up every morning, put on uniform, spikes, glove, and cap, and stand alertly behind second base, bent forward, eyes narrowed, waiting, waiting, waiting. That's all—waiting. Isaac loyally sat in the bleachers and yelled, "Good show, Dad!" and stuff like that, but every one else in town used to snigger and pelt the Newtons with overripe fruit—figs for the elder Newton, apples for the younger. Thus, as we all know, the famous occasion came about when Isaac Newton, struck in the head with an apple, leapt to his feet, shouted, "Europa!" and announced the third law of motion: "For every action there is an opposite and equal reaction!"

(How profoundly true these simple words are! Take, for example, Marlboro Cigarettes. Light one. That's the action. Now what is the reaction? Pleasure, delight, contentment, cheer, and comfort! And why such a happy reaction? Because you have



started with a happy cigarette—a felicitous blend of jolly tobaccos, a good-natured filter, a rollicking flip-top box, a merry soft pack. As Newton often said, "You begin with better makin's, you end with better smokin's." Small wonder they called him "The Swedish Nightingale!"

But I digress. Back to Shakespeare (or "The Gem of the Ocean" as he was ribaldly appellated).

Shakespeare's most important play is, of course, *Hamlet* (or *Macbeth*, as it is sometimes called). This play tells in living color the story of Hamlet, Prince of Denmark, who one night sees a ghost upon the battlements. (Possibly it is a goat he sees: I have a first folio edition that is frankly not too legible.) Anyhow, Hamlet is so upset by seeing the ghost (or goat) that he stabs Polonius and Bare Bodkin. He is thereupon banished to a leather factory by the King, who cries, "Get thee to a tannery!" Thereupon Ophelia refuses her food until Laertes shouts, "Get thee to a beanery!" Ophelia is so miffed that she chases her little dog out of the room, crying, "Out, out damned Spot!" She is fined fifty shillings for swearing, but Portia, in an eloquent plea, gets the sentence commuted to life imprisonment. Thereupon King Lear and Queen Mab proclaim a festival—complete with amateur theatricals, kissing games, and a pie-eating contest. Everyone has a perfectly splendid time till Banquo's ghost (or goat) shows up. This so unhinges Richard III that he drowns his cousin, Butt Malmsey. This leads to a lively discussion during which everyone is killed. The little dog Spot returns to utter the immortal curtain lines:

*Alack, the play forsooth was sad and sobby,  
But be of cheer—there's Marlboros in the lobby!*

© 1962 Max Shulman

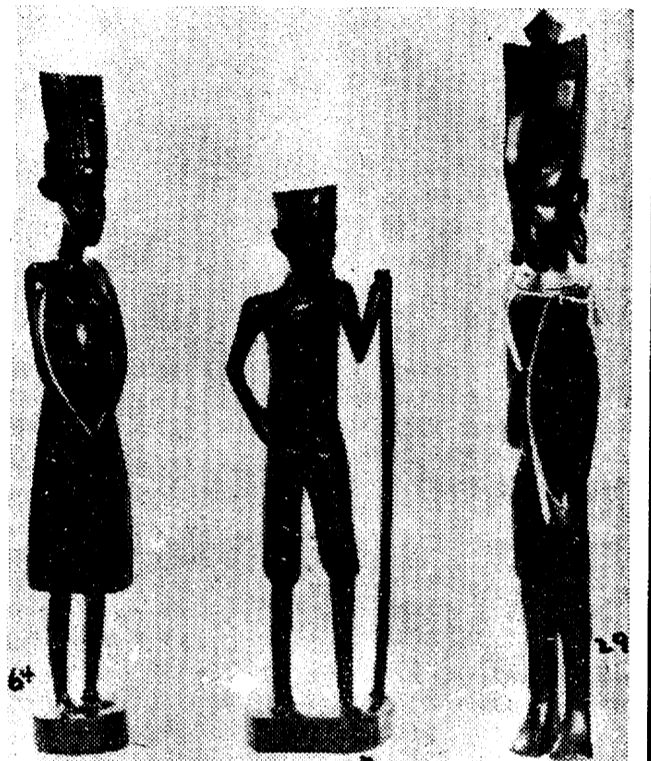
As the slings and arrows of outrageous finals loom closer, perchance the makers of Marlboro are not untoward to offer this friendly suggestion: Get thee to a library!

**Arriving Wednesday**  
**Genuine AFRICAN Imported Hand Carvings**



**EBONY and MVULI**  
 from  
**KENYA GHANA NIGERIA**

**MANY 1 OF A KIND**  
 Also  
**HAND CARVED JEWELRY**  
 of  
**BONE and IVORY**  
**Priced from \$1.25 up**  
**CITY COLLEGE STORE**



**MALOLO® PENNANT STRIPE** in all over print or with stripes at focal points. Orange or blue combinations in sea-worthy 100% cotton. Jackets or trader pants \$6.95, trunks \$3.95.

**CLIPPER STRIPE** pullover deck shirt of luxurious cotton knit with tone striping on front and ¾ sleeves \$7.95. Cotton lined Hawaiian trunks \$6.95. Colors of white/blue, \*peach/tan or beige/teal.

**SEA LANE** bold color stripes knit smartly of 100% cotton in combinations of orange, blue or yellow. Bottom band cardigan jacket \$7.95 stop Hawaiian length trunks \$6.95.

**THE SEAFARING MAN IS A Catalina MAN**  
 (with an All-American Look)

High-seas or pool-side, Catalina boldly splashes color on the waterfront scene  
 In swimwear created in the tradition... American as Apple Pie.



**MALOLO® OUTRIGGER** jacket of cross resistant woven cotton with giant zip and lamp trim. There's an outrigger embroidered on jacket \$8.95, matching trunks \$7.95. In orange, gold, lime or blue.

**MALOLO® PORT O' CALL** polo-style striped printed luxurious cotton beach shirt \$8.95 over medium length cotton Hawaiian trunks \$6.95. Color combinations of brown or green to choose from.

**MALOLO® BRESHIPMAN**, bonded with bold trim. In white, natural, peach or navy. Water-repelling jacket of 100% cotton gab \$7.95. Hawaiian length Lanai cord trunks of corduroy, cotton and rubber \$8.95. \*Imported colors.

Catalina, Inc., Los Angeles, Calif., Another Fine **KR** Maysner-Roth-Product

# OP EDITORIAL PAGE

## Brown

To say that Student Government will be facing a turning point in its history next term sounds trite, but it is the most accurate prophecy that could be made. Implementation of its new constitution will give to the student legislative body, through fee allocations and the Student Activities Board, a substantial taste of real authority—authority that will affect every club and organization on campus. If it bungles its job sufficiently, a majority of students at the College will, perhaps for the first time, directly feel the inconvenience and annoyance that it is the reward for electing incompetent and irresponsible student leaders.

That is why this term's SG election is so important. That is why the person who will guide SG next semester must be the best man possible for the job. That is why *Observation Post* has given its unqualified endorsement to Ted Brown for SG President.

The ability to inspire his fellow Council members to work with and for him is a prerequisite for any efficient student body president. To do this he needs the respect of friends and adversaries alike. Brown appears to have elicited such respect, certainly to a far greater degree than either of his two opponents.

Brown has been criticized for his concentration on outside matters that concern students as students in an academic and intellectual milieu, not only as students confined within a classroom. These critics make it appear that he would spend all his and Council's time arguing and endorsing freedom rides, peace marches, and anti-shelter resolutions. This characterization is blatantly disproved by his past record and stated intentions.

But knowledge and ability to get a renovated SG on the right foot is only half the job of the next President. Imagination and drive to wage a continuous fight against the threat of tuition at the city colleges and for increased funds for the City University graduate programs are urgently needed. Brown has proposed to bring the community into the anti-tuition fight, to contact PTA's, labor union leaders, etc. to get their backing. It is not good enough to be merely vigilant against imposition of a tuition fee, as the other candidates suggest, positive steps such as those advanced by Brown must be taken.

Herb Berkowitz has experience on his side — he has served on SG longer than either of his opponents — and his emphasis on internal school matters would probably get the SAB in adequate working order if he allows his practical nature to predominate over his practical jokes. Yet, it appears that Berkowitz has mistaken the initials SC for Student Clubs. He refuses to see in the duties of SG President anything other than setting up and coordinating the SAB so that it may one day exceed SC in power and prestige.

If there was such a thing as a disendorsement, we would bestow the honor on Alan Blume without hesitation. He has demonstrated no qualification for the post to which he aspires, other than the definite ability to harangue and disrupt Council meetings. He has the potential and the enthusiasm to do a good job as President if he would attempt to act in a more mature fashion, formulate his views and stick by them, and gain the respect of his colleagues rather than antagonize them.

## Vice-President

Of the three choices presented to the voters and ourselves for SG Vice-President, one is totally unacceptable to us, while the other two are only partially acceptable. *Observation Post*, rather than lend its support to a candidate of principle who lacks experience or a candidate of experience who, we fear, lacks principle, is forced to give "No Endorsement" in the Vice-Presidential race.

Both Mark Kessel and Bob Levine possess the intelligence and liking for hard work required for the job. We cannot, however, back either one—Kessel, because his one term on SG was in his own words "barely enough to get the hang of what's going on," Levine, because he has severely compromised himself by running for Vice-President on a ticket headed by Alan Blume.

The absence of an endorsement does not however completely preclude some element of choice and *OP* is most opposed to the election of "The This Campus First" candidate Ira Bloom.

Bloom's ability for command was perhaps best shown earlier this term when, sent by Council to the Student Faculty Fee Committee to plead for an increase in the stipend given NSA delegates, he actually wound up speaking against the motion he was mandated to defend.

Next term whoever is elected will be responsible for setting up the controversial Student Activities Board. One of the most challenging undertakings ever to face an SG officer, the implementation of the club federation is no job for a neophyte. Kessel, although exceptionally mature and able for an SG newcomer, cannot be said in all good conscience to be equal to the job. Willingness to learn is not enough. He lacks experience.

Bob Levine is the only one of the candidates who, in our opinion, possesses the experience, the capability and the viewpoints which would warrant our endorsement. That we were shocked by Mr. Levine's lending his name and prestige to a ticket such as Alan Blume's goes without saying. Our opinion of Blume has been outlined above. There is no need to repeat it here.

The practice of running on slates — loosely formed non-ideological groups of students who stand for election together because several bank accounts are better than one — is more responsible for Mr. Levine's predicament than any other factor. The added publicity which the combined funds of thirty students can procure almost insure their winning. Therefore what is the qualified student who is passed over by the slate of his choice to do?

Indulging ourselves in the stone casting which seems to be so popular in this election, may we inquire why the student leaders who scream the loudest about Levine haven't organized a responsible political party based on beliefs instead of expediency.

Or why they haven't limited the amount of money to be spent on a campaign so that printers costs do not defeat an independent before the polls open.

Or is publicity more important than principle, gentlemen?

## Fields

The two candidates for SG Secretary have little in common except that they are

seeking the same position.

Marjory Fields is our unqualified choice for this post. Miss Fields has served on Council four terms, and has demonstrated a willingness to work, competence, and imagination that has earned the respect of her fellow council members.

She has been College NSA Coordinator for two terms, during the last of which she assisted a Queens College NSA Committee in preparing a comprehensive fact sheet on tuition.

The only fault we can find with Miss Fields' work is that she could have established a closer rapport between NSA and the students at the College, perhaps by holding NSA forums of a topical nature.

Miss Fields has been accused of irresponsibility in some quarters because she resigned from her position as Chairman of the SG Internal Affairs Committee. Perhaps if the membership of that committee had given her the cooperation which any chairman of any committee requires if it is to function well, she would still be functioning as effectively as we feel she can.

Little can be said about Sam Eiferman, Alan Blume's IRT bidder for the position. This, perhaps, is merciful. After serving an undistinguished term on Council, Mr. Eiferman apparently has decided to offer his inexperience, lack of imagination, and general dearth of knowledge of school affairs to SG Exec.

The two candidates for SG Secretary have little in common . . .

## Pell

Mel Pell is eminently qualified for the post of SG Treasurer. We feel he merits our endorsement, despite the fact that he is running unopposed, because of his conscientious record and his willingness to ascribe to SG a broader role than that defined by his running mates on the "This Campus First" ticket.

## Simon, Fields

A successful NSA delegate must possess considerable knowledge both of the workings of the National Student Association and the school he or she is sent to represent, must be able to get his or her views across to others, and be able to lead. Otherwise the delegate will be lost in the crowd.

*Observation Post* feels that Marjory Fields and Howard Simon, of the four students competing for the four delegate positions, possess these attributes. Moreover, they merit our endorsement because of the liberal and well-expressed views they will present at the conference.

## Schlesinger

Ken Schlesinger, the only candidate running on all three tickets, has done a capable job as president of the Junior Class and should be a successful leader of the graduating class. Running on the basis of a "class awakening," Schlesinger shows interest in the forty percent of the College that doesn't belong to clubs, fraternities, or House Plan, but are members of a class. His program in the past has catered to the social desires of the large group of students and promises to adequately fulfill similar demands of the senior class of '63.

**SUMMER JOBS FOR MEN AVAILABLE  
MUST APPLY NOW!**

**WONDERFUL SUMMER OPPORTUNITY  
FOR COLLEGE STUDENTS**

Drive a 1961 Fordomatic Taxi Cab in New York City this summer. High earnings. Work your own hours: days - nights - week-ends. Full and part time.

If you are at least 21 and have had your driver's license three years, we will help you get your hack license.

**CALL MR. JERRY NEHRIN — TO 2-1600  
EN OPERATING CORP. 638 W. 132nd ST.**

**Vote for  
Ted Brown**

Alan Gotthelf  
Jeanne Friedman

THE FRIENDS OF  
HERB BERKOWITZ SOCIETY

HERB—  
SOON YOU MAY BE PRESIDENT  
WE HOPE YOU DO REPENT  
PRESTIGE WILL OBLIVION YOU THEN  
WE HOPE IT WON'T BE ALL.  
—HERB GAND

Act #1  
A SHORT ROMANCE

Hello, Marvia? Zelda. Listen, Marvin, I've had the most marvy idea for you . . . actually, it's quite the thing to do, all the best people do it . . . really, it's so far out it's way in! Marvin, you must, you simply must

**JUMP**

out of an airplane at TRI-STATE SPORT PARACHUTING CENTER, Flemington, NJ  
Hello . . . Hello? Marvin? are you there?  
(Learn and Jump the same day.)  
For information call MR. E-6022 NYC or write: Tri-State, Adams Air Park, Box 208, Flemington, New Jersey.

**Vote for  
Ted Brown**

Hal Moskowitz  
Wendy Cherwin

**Vote for  
Ted Brown**

Mel Litoff  
Sue Chazmar

**PLANNING A TRIP TO EUROPE THIS SUMMER?**

Fly there, then, on the **STUDENT GOVERNMENT FLIGHT** for CCNY students and faculty members.

Leaves June 14 for London  
Returns Sept. 4 from Paris

Contact **BRUCE SOLOMON**

Evenings call  
**WA 7-5695**

**Vote for Ted Brown**

Joel Stern  
Carl Shullman

**We support Ted Brown**

Milt Strauss  
Gary Horowitz

Celebrate **ISRAEL'S** 14th Year of Independence at the Tel Aviv Restaurant 250 W. 72 St., N. Y. 23, N. Y. **FOLKSINGING EVERY NIGHT** No Cover, No Minimum

**We support Ted Brown**

Les Fraidstern  
Ronald Herzog

**carnival** (kar'ne-vel), n. 1. an evening of gay festivity observed at City College on Sat., May 12th. 2. an affair featuring fifty fun-filled booths and games that open at 8 P.M. 3. an occasion characterized by two presentations of the Musical Comedy Society Revue, for which tickets for reserved seats are on sale from the sombrero-wearers, in 317 Finley, and in the Finley lobby. 4. a starlit night promising twisting to music on the Finley mall. 5. an event highlighted by the selection and crowning of the City College Carnival Queen.

**We support Ted Brown**

Irwin Pronin  
Joel Divack

**Girl Watcher's Guide**  
Presented by Pall Mall Famous Cigarettes

**ISRAEL**

ONLY **\$295.-**

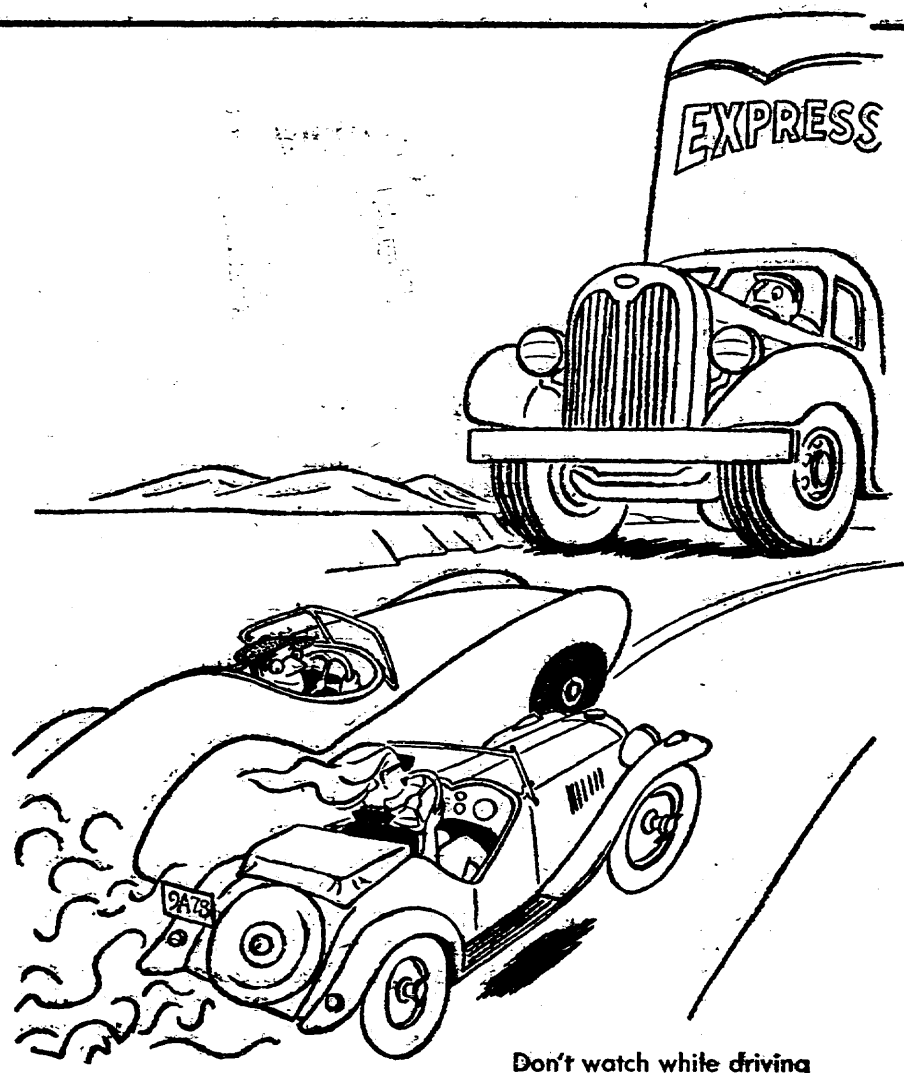
**FROM EUROPE THIS SUMMER**  
14 TO 30-DAYS

If you are going to Europe this summer, here is a rare opportunity to combine a trip across Europe, a Mediterranean sea voyage, and an exciting visit to the dynamic land of Israel. Your \$295 will provide:

- Railroad ticket from most major European cities to main Mediterranean ports, according to your plans. Visit cities enroute.
- Round trip Mediterranean Cruise to Israel, stopping at Athens, Rhodes, and Cyprus.
- Stay on a KIBBUTZ for 14-30 days, at your choice.
- Meet and work with young Israelis in the same spirit of mutual cooperation and understanding that marks the efforts of the Peace Corps.

Limited participation.  
Also Student Trips from the U.S. to Europe and/or Israel.

**CALL OR WRITE NOW:**  
**ISRAEL EXPRESS INC.**  
550 6TH AVE., N. Y. 36, N. Y.  
JU 2-7430



Don't watch while driving

**LESSON 13 - A few "don'ts"**

Now that we have learned the *how* of girl watching, let's consider a few safety precautions. They are presented, not as strict rules (since some experts with highly developed eyeball control enjoy watching while running the high hurdles, for example), but merely as friendly suggestions. 1. Don't watch while driving. 2. Don't watch

while drilling teeth (dental students only). 3. Don't watch while removing tonsils (medical students only). 4. Don't watch while mixing chemicals in the lab. 5. Don't watch girls who are engaged to the captain of the football team. Our final suggestion is a *do*, not a don't. Taste Pall Mall — so smooth, so satisfying, so downright smokeable!

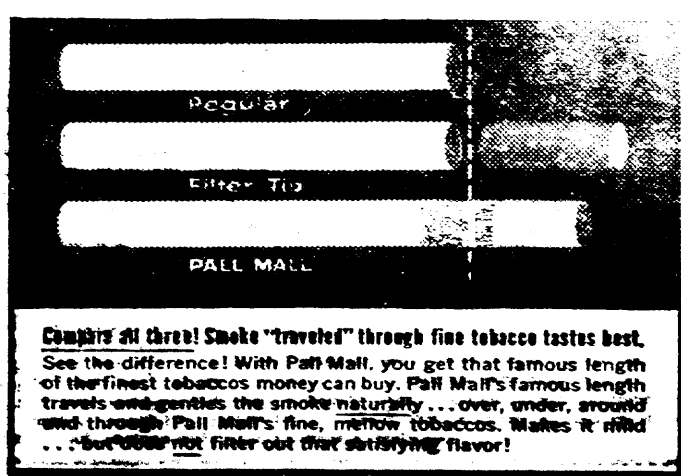
College Students are invited to participate in a **FARM WORK AND HEBREW STUDY PROGRAM** at the Hechalutz Farm, Hightstown, N.J. Recreational and Educational Program Israel Kibbutz Atmosphere Apply: Hashomer Hatzair 112 4th Ave., N.Y.C. Telephone: GRamercy 3-4747

**The New Social Diseases are Overkill Euphoria and Nuclear Prostratus Extremis**

Either one will satisfy your  
Secret: Death Wish!!!

IF THE HEAD IS PROTECTED - THE NATION WILL SURVIVE!

WORDS CONSTRUCTION  
230 N. 15th Ave. - Phoenix 7, Ariz.



**Pall Mall's natural mildness is so good to your taste!**

So smooth, so satisfying, so downright smokeable!

Product of The American Tobacco Company  
"Relax in our mild taste!"

This ad based on the book, "The Girl Watcher's Guide." Text Copyright by Edward S. Seltzer. Illustration Copyright by Edward S. Seltzer.



# Netmen To Host Adelphi; May Decide Met Crown

The only major obstacle left between the College's tennis team and the Metropolitan Championship is the Adelphi contest which will be played on the Finley courts Wednesday at 2 PM.

The Beavers actually have four more opponents to play, but Hunter, USMMA, and Brooklyn Poly aren't expected to supply any more competition than the five teams the netmen have already blanked 9-0.

Adelphi, second in the Met Conference last year, is more similar to Brooklyn, however. The Beavers were able to squeeze past the Kingsmen, 5-4, only by winning the last three matches.

Lavender Coach Harry Karlin thinks that "if we can win two singles matches against Adelphi we have a better than even chance to beat them." He then added confidently, "I think we will win three."

Karlin's confidence is solidly based on three undefeated doubles teams. Even the third team of Joe Borowsky and Al Loss is so good that it played in first position against weaker opponents.

Co-captains Al Smith and Stan Freundlich are the reigning Met doubles champions. Two lower classmen Karl Otto and Bernie Wasserman play in the second doubles notch.

Both coaches expect a very close score. Karlin predicted, "The score will be 5-4 either way." The Adelphi coach said uncertainly, "I think we can win, but I suppose he [Karlin] feels the same way."

Adelphi is also undefeated with a 4-0 league record, but then they haven't played Brooklyn yet. The Beavers are 6-0.

In the pivotal first singles match the Lavender has every reason to be confident. Against Brooklyn, Al Smith topped Kingsman Steve Rubin 7-5, 6-3. Rubin was considered the best in the league. However, Smith's opponent for Wednesday, Pete Jurow, has lost only one match all season.

Stan Freundlich also has his work cut out for him. His Panther counterpart, Noel Corpuel is undefeated in seven matches.

The potential weak spot in the Brown-and-Gold line-up is Norm

## Stickmen Meet Lafayette Next

The Beaver stickmen will get a chance to show some of their speed on attack to an above-par goalie in Wednesday's game against Lafayette College at Lewisohn Stadium.

Last year the Leopard's goalie, Dick Altman, led the nation in total saves, having stopped 206 shots. He also stopped most in a single game, 32.

The chief defenseman in front of Altman is one of the three co-captains, senior Bob Gursky.

Eleven lettermen have returned from last season's squad, among them leading scorer, Don Rittler.

In the closing game last May the Beaver's rolled over the Leopard's, 11-6. An improved group from Lafayette should put up a better battle this year.

Johnny Orlando will lead the Beaver attack flanked by Andy Muller and Rudy Chaloupka. Jeff Moslowitz, Emil Castro and Joel Muhlstein will provide a secondary assault from the midfield.

Red Brown and Harvey Leshnick, both better than six feet tall, will try to keep Beaver goalie Richie Auster from working too hard.



Harry Karlin Predicts Triumph

Reich—he has lost three of five matches. It will be Joe Borowsky's responsibility to stop him again.

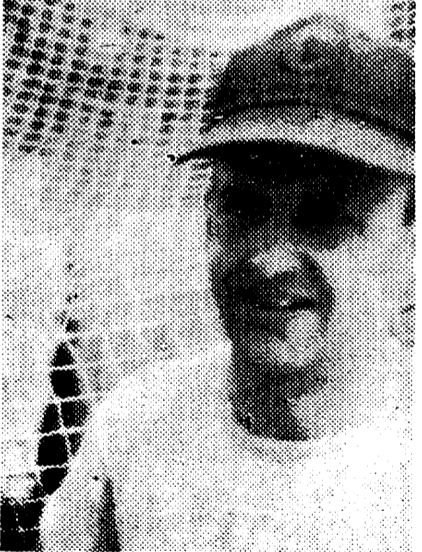
## Coach To Shift Line-up Before NYU Ballgame

Having jockeyed his starting line-up around a great deal, Baseball Coach Frank Seely is "planning some radical changes."

While he would not designate just whom or what he had in mind, he said all changes will be reflected in the starting line-ups.

The power section of the line-up is almost immutable. Bart Frazzitta, John Ippolito and Artie Goldner will probably remain in the same spots, although it's barely conceivable that he'll change their positions.

Another man who's been chang-



Coach Frank Seely Changes Line-up

ing positions is New York University's coach Don Newberry. The Beavers meet the Violets Thursday at Macombs Dam Park.

Newberry has moved his infield around with the result that one of the better hitters on the team, sophomore Larry Oehler replaced senior Pete Motta.

Seely must be hoping the same thing will happen to him.

The Seeleymen will be batting against junior Bob Malota, who has a 2-2 record. He's usually described as a "cutie" by the opposition.

Asked about his offensive, Newberry commented, "I wish we had some good hitters." He does have one good .375 hitter, Warren Al-

**We support Ted Brown**

Ed Beiser  
Danielle Fraenkel

# Trackmen Win Municipals, Top Queens, B'klyn, Hunter

By RICHIE COE

The College's trackmen smashed the other City University colleges Friday to retain the Municipal crown. The Beavers scored 92 points to 40 for Queens, 24 for Hunter

The Beavers jumped to a quick lead as Gerry Fasman set a meet and College record by heaving the 16-pound hammer 131-3. Co-captain Vinnie Hanzich was a close second with a toss of 127-10 1/4.

The Lavender also won the final event — a thrilling Mile Relay. Joel Saland turned in a strong 52.1 lead-off leg, and Billy DeAngelis hit 51.7 for the next. But Queen's star, Stoney Ford chal-

lenged Don Cavellini on the third lap. Don, however, responded with a superb 50.9 clocking which left Ford twenty yards in his dust. Bill Hill then won easily—anchoring in 52.3.

Lenny Zane turned in his usual exemplary performance, winning the Two-Mile in 9:59.7 and striding to an easy first-place tie with Beavers Julian Offsay and Billy DeAngelis in the Mile.

Tom Sieberg (who plays soccer in the fall) surprised everyone by edging Hanzich in the Javelin with a toss of 160 1/4. Hanzich, however had gold medals from the Shot-Put and the Discus to console himself with.

Bill Hill won the Broad Jump with a leap of 19-8, tied for first in the Pole Vault at 9-6, and took a fourth in the Quarter-Mile in addition to his fine anchor leg on the Lavender mile relay.

Norman Jackman stood out among the College's sprinters. He missed winning the 100-yard Dash by a tenth of a second and in the 200-Yard Dash by a mere three-tenths. He also took a third in the Broad Jump.

In the hurdle events Cavellini also had a couple of near misses. He finished close seconds to Al Zimmerman in both the high and low hurdles. In between these efforts he also placed third in the Quarter-Mile.

High jumpers Nolan and Alba-



Lenny Zane Exemplary Performance

rino scored five points for the College with leaps of 5-8 and 5-10 respectively. Unfortunately a man from Hunter by the name of Prince soared to 5-10 to win the event.

Mikes Didyo and Lester backed up Zane in the Two-Mile with second and third places. Both of them far outdistanced the rest of the field.

In the frosh section of the meet the Lavender didn't fare quite so well. The Beavers cubs were giving Queens quite a fight for first until Queens won four of the last five events to win 80-57. Hunter and Brooklyn were far behind with respective scores of 16 and 9.

### The Line-up

**Beavers**  
Al Smith  
Stan Freundlich  
Karl Otto  
Joe Borowsky  
Jeff Zupan  
All Loss

vs.

**Panthers**  
Pete Jurow  
Noel Corpuel  
Steve Soloman  
Norm Reich  
Allan Pitegoff  
Mike Corpuel

Wednesday, May 9 on the Finley Courts.

### Soccer . . .

Soccer Coach Harry Karlin called a meeting of all his booters and interested newcomers for Thursday at 12:30 PM in the swimming pool (yes, in the swimming pool). Karlin will hand out discount tickets for professional soccer games.

## SIC-FLICS

**"We're not leaving till we find him and his overdue library books!"**

**21 GREAT TOBACCOS MAKE 20 WONDERFUL SMOKES!**  
AGED MILD. BLENDED MILD - NOT FILTERED MILD - THEY SATISFY.